

100KVA 416 VOLTS TO 230 VOLTS SINGLE PHASE ISOLATION TRANSFORMER

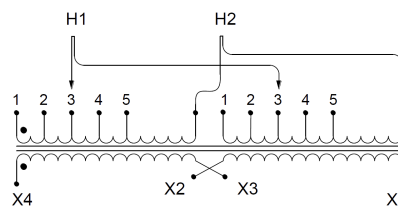
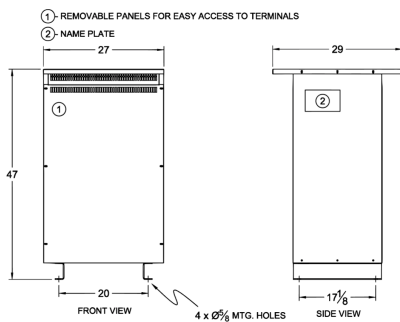
\$9,999.55 CAD

Single Phase Isolation Transformer with a capacity of 100kVA, transforming 416 Volts to 230 Volts

SKU: SC100G-C1/Z3

Categories: [Isolation Transformers](#)

SCHEMATIC/DIAGRAM AND DIMENSION PICTURES



Single Phase Isolation Transformer with a capacity of 100kVA, transforming 416 Volts to 230 Volts

100KVA 416 VOLTS TO 230 VOLTS
SINGLE PHASE ISOLATION
TRANSFORMER



PRODUCT SPECIFICATIONS

Weight	711 lbs
Phases	1
kVA	100
Connection	1Ph-2coil-5t-SD
Primary Voltage	416
Primary Max Current	240.38A
Primary Markings	H1-H2
Primary Terminals	600 MCM – 2
Secondary Voltage	230
Secondary Max Current	434.78A
Secondary Markings	X1-X2
Secondary Terminals	600 MCM – 2
Primary Taps	+/- 2 x 2.5%
Conductor Material	Copper
BIL (Insulation) Level	10kV
Efficiency (@35% Load) %	98.60% (DOE 2016/NRCan 2019)
Impedance Range	4.0 – 6.0%
Sound (db)	50
Enclosure Type	NEMA 3R Indoor
Enclosure Size	E3R-8S
Finish/Colour	Polyester Powder Coat – ANSI/ASA 61 Grey
Standards & Certifications	CSA Certified File No. LR34493, UL Listed File No. E108255, ISO 9001:2015 Registered
Temperatue Rise	150°C

OFFICIAL QUOTE

100KVA 416 VOLTS TO 230 VOLTS
SINGLE PHASE ISOLATION
TRANSFORMER



Insuation Class	150°C
Country/Manufacturer	Canada/RPM
Finish/Colour	Polyester Powder Coat – ANSI/ASA 61 Grey