

## 15KVA 480 VOLTS TO 240Y/139 VOLTS THREE PHASE ENCAPSULATED ISOLATION TRANSFORMER

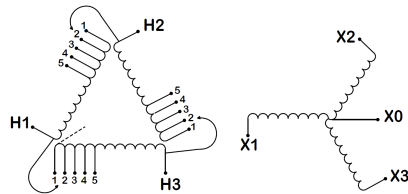
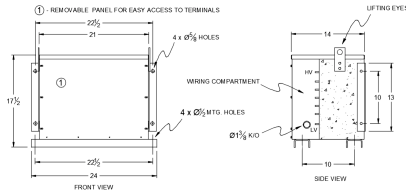
**\$5,346.00 CAD**

Three Phase Encapsulated Isolation Transformer  
with a capacity of 15kVA, transforming 480 Volts  
to 240Y/139 Volts

**SKU:** BC15H-S/EP

**Categories:** [Encapsulated Isolation Transformer](#)

### SCHEMATIC/DIAGRAM AND DIMENSION PICTURES



Three Phase Encapsulated Isolation Transformer with a capacity of 15kVA, transforming 480 Volts to 240Y/139 Volts



15KVA 480 VOLTS TO 240Y/139  
VOLTS THREE PHASE ENCAPSULATED  
ISOLATION TRANSFORMER

PRODUCT SPECIFICATIONS

|                            |  |
|----------------------------|--|
| Weight                     | 350 lbs  |
| Phases                     | <a href="#">3</a>  |
| kVA                        | <a href="#">15</a>   |
| Connection                 | <a href="#">3Ph-DY-5T-SD</a>   |
| Primary Voltage            | <a href="#">480</a>  |
| Primary Max Current        | <a href="#">18A</a>  |
| Primary Markings           | <a href="#">H1-H2-3</a>  |
| Primary Terminals          | <a href="#">#2-14 AWG</a>  |
| Secondary Voltage          | <a href="#">240Y/139</a>   |
| Secondary Max Current      | <a href="#">36.1A</a>  |
| Secondary Markings         | <a href="#">X0-X1-X2-X3</a>  |
| Secondary Terminals        | <a href="#">#2-14 AWG</a>  |
| Primary Taps               | <a href="#">+/- 2 x 2.5%</a>   |
| Conductor Material         | <a href="#">Copper</a>   |
| BIL (Insulation) Level     | <a href="#">10kV</a>   |
| Efficiency (@35% Load) %   | <a href="#">N/A</a>  |
| Impedance Range            | <a href="#">1.5 – 3.5%</a>   |
| Sound (db)                 | <a href="#">45</a>   |
| Enclosure Type             | <a href="#">NEMA 3R Indoor</a>   |
| Enclosure Size             | <a href="#">E3R-3PEP-4</a>   |
| Finish/Colour              | <a href="#">Polyester Powder Coat – ANSI/ASA 61 Grey</a>   |
| Standards & Certifications | <a href="#">CSA Certified File No. LR34493, UL Listed File No. E108255, ISO 9001:2015 Registered</a> |
| Country/Manufacturer       | <a href="#">Canada/RPM</a>   |