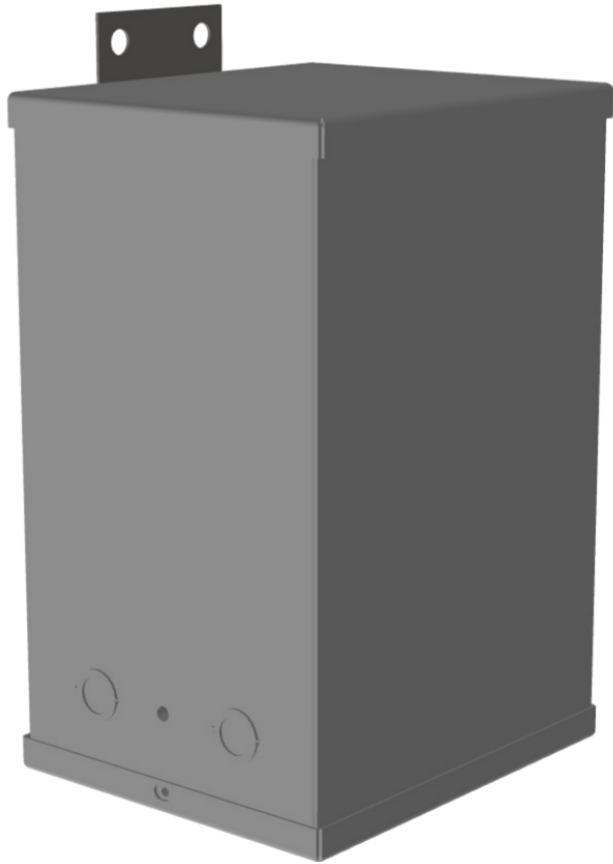




1.5KVA 600 VOLTS TO 120/240 VOLTS
SINGLE PHASE ENCAPSULATED
ISOLATION TRANSFORMER



1.5KVA 600 VOLTS TO
120/240 VOLTS SINGLE
PHASE ENCAPSULATED
ISOLATION TRANSFORMER

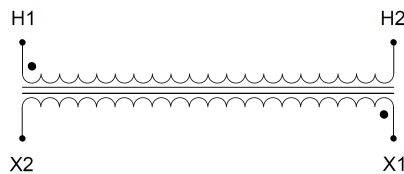
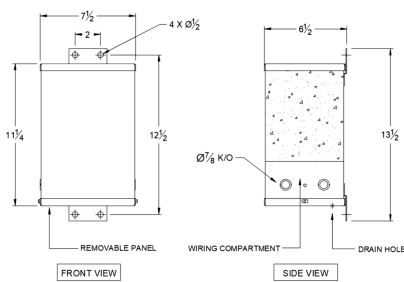
\$610.00 CAD

Single Phase Encapsulated Isolation Transformer with a capacity of 1.5kVA, transforming 600 Volts to 120/240 Volts

SKU: SC1.5J-K/EP

Categories: [Encapsulated Isolation Transformer](#)

SCHEMATIC/DIAGRAM AND DIMENSION PICTURES



Single Phase Encapsulated Isolation Transformer with a capacity of 1.5kVA, transforming 600 Volts to 120/240 Volts



1.5KVA 600 VOLTS TO 120/240 VOLTS
SINGLE PHASE ENCAPSULATED
ISOLATION TRANSFORMER

PRODUCT SPECIFICATIONS

Weight	40 lbs
Phases	1
kVA	1.5
Connection	1Ph-1coil-NT-SD
Primary Voltage	600
Primary Max Current	2.5A
Primary Markings	H1-H2
Primary Terminals	Leads
Secondary Voltage	120/240
Secondary Max Current	12.5A
Secondary Markings	X1-X3-X2-X4
Secondary Terminals	Leads
Primary Taps	N/A
Conductor Material	Copper
BIL (Insulation) Level	10kV
Efficiency (@35% Load) %	N/A
Impedance Range	1.5 – 3.5%
Sound (db)	40
Enclosure Type	NEMA 3R Indoor
Enclosure Size	E3R-1PEP-3
Finish/Colour	Polyester Powder Coat – ANSI/ASA 61 Grey
Standards & Certifications	CSA Certified File No. LR34493, UL Listed File No. E108255, ISO 9001:2015 Registered
Country/Manufacturer	Canada/RPM