

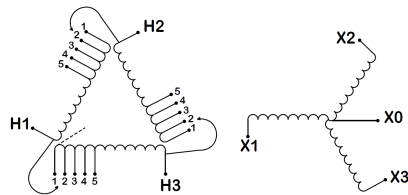
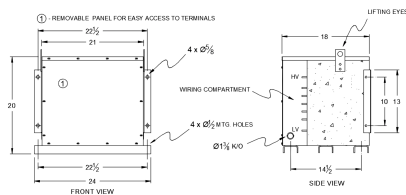
## BC30J-F/EP

**\$3,013.64 USD**

SKU: 6647c67c924b

Categories: [Encapsulated Isolation Transformer](#)

### SCHEMATIC/DIAGRAM AND DIMENSION PICTURES



### PRODUCT SPECIFICATIONS

Weight	520 lbs
Phases	<a href="#">3</a>
kVA	<a href="#">30</a>
Connection	<a href="#">3Ph-DY-5T-SD</a>
Primary Voltage	<a href="#">600</a>
Primary Max Current	<a href="#">28.9A</a>
Primary Markings	<a href="#">H1-H2-3</a>
Primary Terminals	<a href="#">#2-14 AWG</a>



Secondary Voltage	<a href="#">380Y/220</a>
Secondary Max Current	<a href="#">45.6A</a>
Secondary Markings	<a href="#">X0-X1-X2-X3</a>
Secondary Terminals	<a href="#">#2-14 AWG</a>
Primary Taps	<a href="#">+/- 2 x 2.5%</a>
Conductor Material	<a href="#">Copper</a>
Temperatue Rise	<a href="#">130°C</a>
Insuation Class	<a href="#">200°C</a>
BIL (Insulation) Level	<a href="#">10kV</a>
Efficiency	<a href="#">N/A</a>
Impedance	<a href="#">1.5 – 3.5%</a>
Sound (db)	<a href="#">45</a>
Enclosure Type	<a href="#">NEMA 3R Indoor</a>
Enclosure	<a href="#">E3R-3PEP-5</a>
Finish	<a href="#">Polyster Powder Coat – ANSI/ASA 61 Grey</a>
Standards & Certifications	<a href="#">CSA Certified File No. LR34493, UL Listed File No. E108255, ISO 9001:2015 Registered</a>