

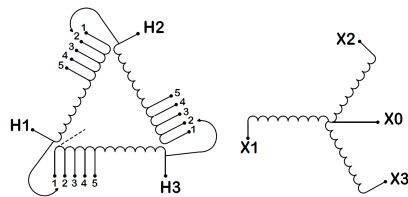
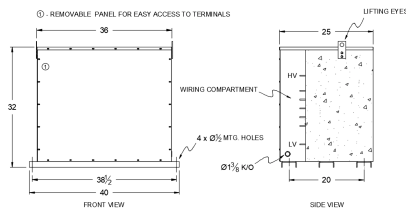
## BA112H-N1/EP

### \$18,942.00 CAD

SKU: f3e55ebfbcac

Categories: [Encapsulated Isolation Transformer](#)

#### SCHEMATIC/DIAGRAM AND DIMENSION PICTURES



#### PRODUCT SPECIFICATIONS

|                     |                              |
|---------------------|------------------------------|
| Weight              | 1365 lbs                     |
| Phases              | <a href="#">3</a>            |
| kVA                 | <a href="#">112.5</a>        |
| Connection          | <a href="#">3Ph-DY-5T-SD</a> |
| Primary Voltage     | <a href="#">480</a>          |
| Primary Max Current | <a href="#">135.3A</a>       |
| Primary Markings    | <a href="#">H1-H2-3</a>      |
| Primary Terminals   | <a href="#">300MCM-6</a>     |



|                            |  |
|----------------------------|--|
| Secondary Voltage          | <a href="#">400Y/231</a>   |
| Secondary Max Current      | <a href="#">41.6A</a>  |
| Secondary Markings         | <a href="#">X0-X1-X2-X3</a>  |
| Secondary Terminals        | <a href="#">300MCM-6</a>   |
| Primary Taps               | <a href="#">+/- 2 x 2.5%</a>   |
| Conductor Material         | <a href="#">Aluminum</a>   |
| Temperatue Rise            | <a href="#">130°C</a>  |
| Insuation Class            | <a href="#">200°C</a>  |
| BIL (Insulation) Level     | <a href="#">10kV</a>   |
| Efficiency                 | <a href="#">N/A</a>  |
| Impedance                  | <a href="#">1.5 – 3.5%</a>   |
| Sound (db)                 | <a href="#">50</a>   |
| Enclosure Type             | <a href="#">NEMA 3R Indoor</a>   |
| Enclosure                  | <a href="#">E3R-3PEP-8</a>   |
| Finish                     | <a href="#">Polyster Powder Coat – ANSI/ASA 61 Grey</a>  |
| Standards & Certifications | <a href="#">CSA Certified File No. LR34493, UL Listed File No. E108255, ISO 9001:2015 Registered</a> |