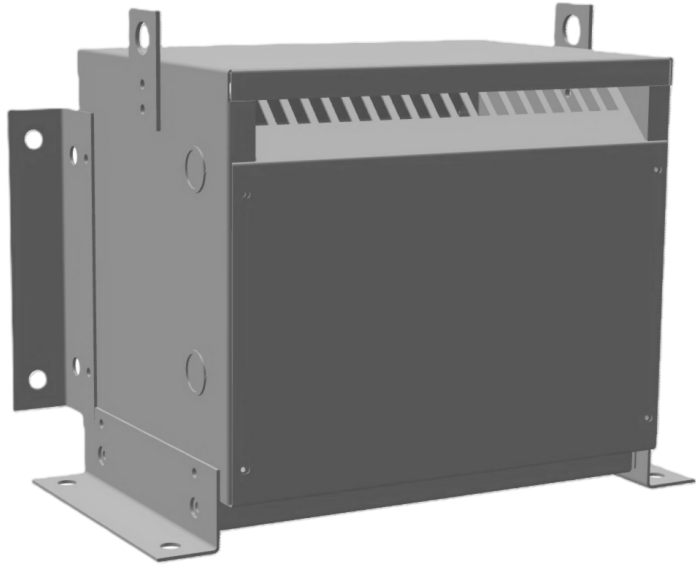




# OFFICIAL QUOTE

## 9KVA 600 VOLTS TO 208 VOLTS THREE PHASE AUTOTRANSFORMER



### 9KVA 600 VOLTS TO 208 VOLTS THREE PHASE AUTOTRANSFORMER

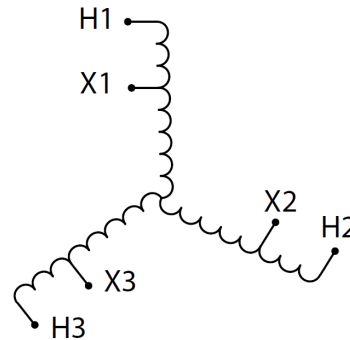
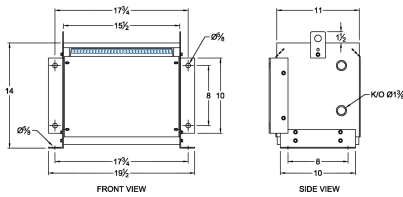
**\$2,014.50 CAD**

Three Phase Autotransformer with a capacity of 9kVA, transforming 600Y Volts to 208Y Volts

SKU: RC9J-B

Categories: [Autotransformers](#)

#### SCHEMATIC/DIAGRAM AND DIMENSION PICTURES



Three Phase Autotransformer with a capacity of 9kVA, transforming 600Y Volts to 208Y Volts



## OFFICIAL QUOTE

### 9KVA 600 VOLTS TO 208 VOLTS THREE PHASE AUTOTRANSFORMER



#### PRODUCT SPECIFICATIONS

<b>Weight</b>	41 lbs
<b>Phases</b>	<a href="#">3</a>
<b>kVA</b>	<a href="#">9</a>
<b>Connection</b>	<a href="#">3PhA-NT-1</a>
<b>Primary Voltage</b>	<a href="#">600</a>
<b>Primary Max Current</b>	<a href="#">8.7A</a>
<b>Primary Markings</b>	<a href="#">H1-H2-H3</a>
<b>Primary Terminals</b>	<a href="#">Terminal Blocks</a>
<b>Secondary Voltage</b>	<a href="#">208</a>
<b>Secondary Max Current</b>	<a href="#">25A</a>
<b>Secondary Markings</b>	<a href="#">X1-X2-X3</a>
<b>Secondary Terminals</b>	<a href="#">Terminal Blocks</a>
<b>Primary Taps</b>	<a href="#">N/A</a>
<b>Conductor Material</b>	<a href="#">Copper</a>
<b>Insulation Class</b>	<a href="#">220°C (Class H)</a>
<b>BIL (Insulation) Level</b>	<a href="#">10kV</a>
<b>Efficiency (@35% Load) %</b>	<a href="#">N/A</a>
<b>Impedance Range</b>	<a href="#">2.5 – 4.5%</a>
<b>Sound (db)</b>	<a href="#">40</a>
<b>Enclosure Type</b>	<a href="#">NEMA 1</a>
<b>Enclosure Size</b>	<a href="#">E1-3</a>
<b>Finish/Colour</b>	<a href="#">Polyester Powder Coat – ANSI/ASA 61 Grey</a>
<b>Standards &amp; Certifications</b>	<a href="#">CSA Certified File No. LR34493, UL Listed File No. E108255, ISO 9001:2015 Registered</a>



OFFICIAL QUOTE

9KVA 600 VOLTS TO 208 VOLTS  
THREE PHASE AUTOTRANSFORMER



Country/Manufacturer

[Canada/RPM](#)