



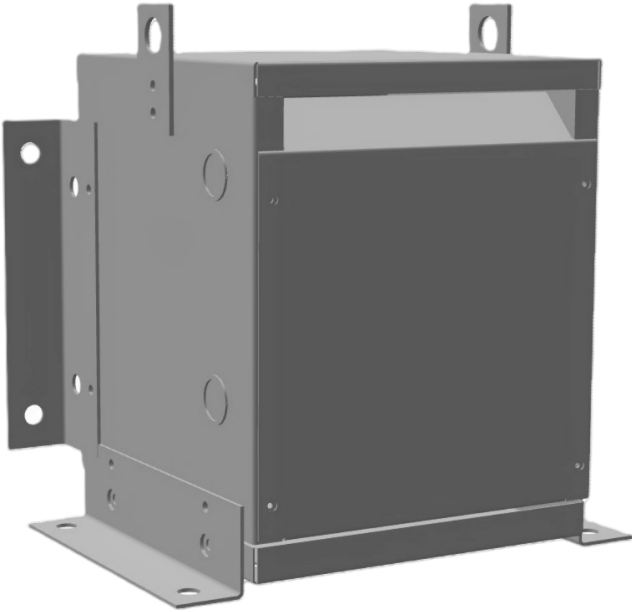
10KVA 208 VOLTS TO 600 VOLTS SINGLE PHASE AUTOTRANSFORMER

\$1,219.98 USD

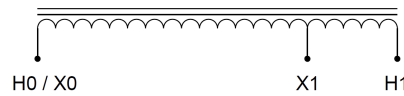
Single Phase Autotransformer with a capacity of 10kVA, transforming 208 Volts to 600 Volts

SKU: MC10B-J

Categories: [Autotransformer](#)



SCHEMATIC/DIAGRAM AND DIMENSION PICTURES



Single Phase Autotransformer with a capacity of 10kVA, transforming 208 Volts to 600 Volts



PRODUCT SPECIFICATIONS

Weight	94.6 lbs
Phases	1
kVA	10
Connection	1PhA-NT-1
Primary Voltage	208
Primary Max Current	27.8A
Primary Markings	X0-X1
Primary Terminals	Terminal Blocks
Secondary Voltage	600
Secondary Max Current	9.6A
Secondary Markings	H0-H1
Secondary Terminals	Terminal Blocks
Primary Taps	N/A
Conductor Material	Copper
Insulation Class	220°C (Class H)
BIL (Insulation) Level	10kV
Efficiency (@35% Load) %	N/A
Impedance Range	2.5 – 4.5%
Sound (db)	40 dB
Enclosure Type	NEMA 1
Enclosure Size	E1-2
Finish/Colour	Polyester Powder Coat – ANSI/ASA 61 Grey
Standards & Certifications	CSA Certified File No. LR34493, UL Listed File No. E108255, ISO 9001:2015 Registered



OFFICIAL QUOTE

10KVA 208 VOLTS TO 600 VOLTS
SINGLE PHASE AUTOTRANSFORMER



Country/Manufacturer	Canada/RPM
----------------------	----------------------------