

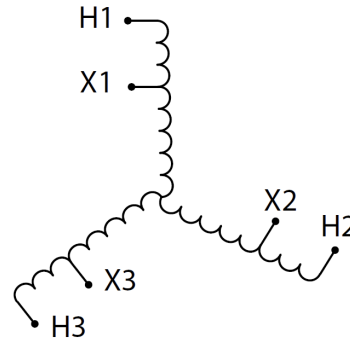
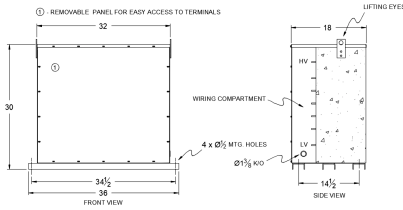
RA112H-C/EP

\$14,140.00 CAD

SKU: 40613bdc479

Categories: [Encapsulated Autotransformer](#)

SCHEMATIC/DIAGRAM AND DIMENSION PICTURES



PRODUCT SPECIFICATIONS

Weight	1100 lbs
Phases	3
kVA	112.5
Connection	3PhA-NT-1
Primary Voltage	480



Primary Max Current	135.3A
Primary Markings	H1-H2-H3
Primary Terminals	300MCM-6
Secondary Voltage	240
Secondary Max Current	270.6A
Secondary Markings	X1-X2-X3
Secondary Terminals	600MCM-2
Primary Taps	N/A
Conductor Material	Aluminum
Insulation Class	200°C
BIL (Insulation) Level	10kV
Impedance	0.5 – 1.5%
Sound (db)	50
Enclosure Type	NEMA 3R Indoor
Enclosure	E3R-3PEP-7
Finish	Polyster Powder Coat – ANSI/ASA 61 Grey
Standards & Certifications	CSA Certified File No. LR34493, UL Listed File No. E108255, ISO 9001:2015 Registered