



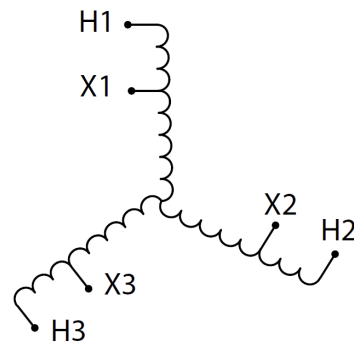
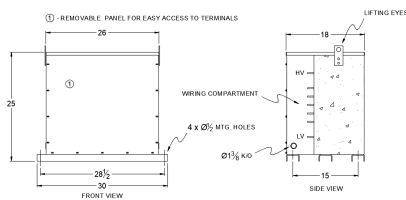
RA225J-H/EP

\$5,974.98 USD

SKU: 358f84300c69

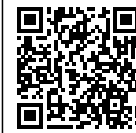
Categories: [Encapsulated Autotransformer](#)

SCHEMATIC/DIAGRAM AND DIMENSION PICTURES



PRODUCT SPECIFICATIONS

Weight	830 lbs
Phases	3
kVA	225
Connection	3PhA-NT-1
Primary Voltage	600



Primary Max Current	216.5A
Primary Markings	H1-H2-H3
Primary Terminals	600MCM-2
Secondary Voltage	480
Secondary Max Current	270.6A
Secondary Markings	X1-X2-X3
Secondary Terminals	600MCM-2
Primary Taps	N/A
Conductor Material	Aluminum
Insuation Class	200°C
BIL (Insulation) Level	10kV
Impedance	0.5 – 1.5%
Sound (db)	50
Enclosure Type	NEMA 3R Indoor
Enclosure	E3R-3PEP-6
Finish	Polyster Powder Coat – ANSI/ASA 61 Grey
Standards & Certifications	CSA Certified File No. LR34493, UL Listed File No. E108255, ISO 9001:2015 Registered