



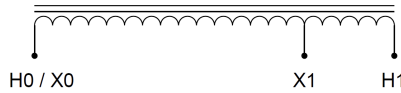
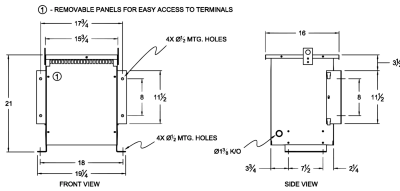
MC25H-C

\$2,129.00 CAD

SKU: 61ac7a1d35d9

Categories: [Autotransformer](#)

SCHEMATIC/DIAGRAM AND DIMENSION PICTURES



PRODUCT SPECIFICATIONS

Weight	140 lbs
Phases	1
kVA	25
Connection	1PhA-NT-1
Primary Voltage	480
Primary Max Current	52.1A
Primary Markings	H0-H1



Primary Terminals	#2-14 AWG
Secondary Voltage	240
Secondary Max Current	104.2A
Secondary Markings	X0-X1
Secondary Terminals	#2/0-6 AWG
Primary Taps	N/A
Conductor Material	Copper
Insulation Class	220°C
BIL (Insulation) Level	10kV
Efficiency	N/A
Impedance	2.5 – 4.5%
Sound (db)	42
Enclosure Type	NEMA 3R Indoor
Enclosure	E3R-4
Finish	Polyster Powder Coat – ANSI/ASA 61 Grey
Standards & Certifications	CSA Certified File No. LR34493, UL Listed File No. E108255, ISO 9001:2015 Registered