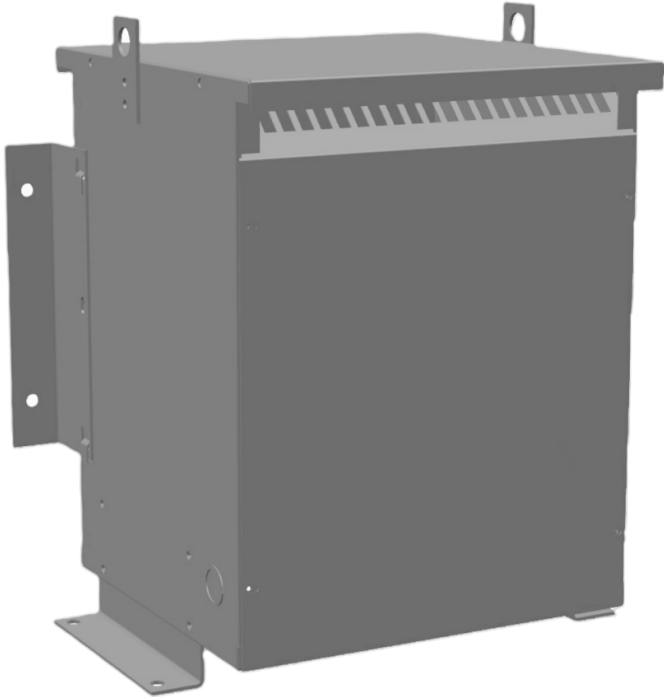




**25KVA 347 VOLTS TO 230 VOLTS
SINGLE PHASE AUTOTRANSFORMER**



**25KVA 347 VOLTS TO 230
VOLTS SINGLE PHASE
AUTOTRANSFORMER**

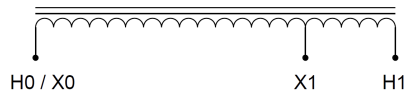
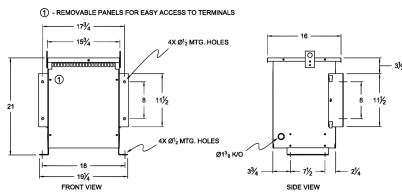
\$1,849.10 CAD

Single Phase Autotransformer with a capacity of 25kVA, transforming 347 Volts to 230 Volts

SKU: MC25E-C1

Categories: [Autotransformer](#)

SCHEMATIC/DIAGRAM AND DIMENSION PICTURES



Single Phase Autotransformer with a capacity of 25kVA, transforming 347 Volts to 230 Volts



PRODUCT SPECIFICATIONS

Weight	110.3 lbs
Phases	1
kVA	25
Connection	1PhA-NT-1
Primary Voltage	347
Primary Max Current	41.6A
Primary Markings	H0-H1
Primary Terminals	#2-14 AWG
Secondary Voltage	230
Secondary Max Current	62.8A
Secondary Markings	X0-X1
Secondary Terminals	#2-14 AWG
Primary Taps	N/A
Conductor Material	Copper
Insulation Class	220°C (Class H)
BIL (Insulation) Level	10kV
Efficiency (@35% Load) %	N/A
Impedance Range	1.0 – 3.0%
Sound (db)	40 dB
Enclosure Type	NEMA 3R Indoor
Enclosure Size	E3R-4
Finish/Colour	Polyester Powder Coat – ANSI/ASA 61 Grey
Standards & Certifications	CSA Certified File No. LR34493, UL Listed File No. E108255, ISO 9001:2015 Registered



OFFICIAL QUOTE

25KVA 347 VOLTS TO 230 VOLTS
SINGLE PHASE AUTOTRANSFORMER



Country/Manufacturer	Canada/RPM
----------------------	----------------------------