

100KVA 230 VOLTS TO 415 VOLTS SINGLE PHASE AUTOTRANSFORMER

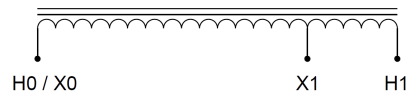
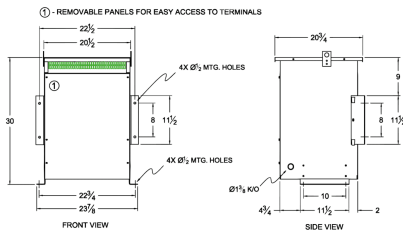
\$5,827.00 CAD

Single Phase Autotransformer with a capacity of
100kVA, transforming 230 Volts to 415 Volts

SKU: MC100C1-G2

Categories: [Autotransformer](#)

SCHEMATIC/DIAGRAM AND DIMENSION PICTURES



Single Phase Autotransformer with a capacity of 100kVA, transforming 230 Volts to 415 Volts



PRODUCT SPECIFICATIONS

Weight	379.4 lbs
Phases	1
kVA	100
Connection	1PhA-NT-1
Primary Voltage	230
Primary Max Current	251A
Primary Markings	X0-X1
Primary Terminals	600MCM-2
Secondary Voltage	415
Secondary Max Current	139.1A
Secondary Markings	H0-H1
Secondary Terminals	300MCM-6
Primary Taps	N/A
Conductor Material	Copper
Insulation Class	220°C (Class H)
BIL (Insulation) Level	10kV
Efficiency (@35% Load) %	N/A
Impedance Range	1.5 – 3.5%
Sound (db)	45 dB
Enclosure Type	NEMA 3R Indoor
Enclosure Size	E3R-6
Finish/Colour	Polyester Powder Coat – ANSI/ASA 61 Grey
Standards & Certifications	CSA Certified File No. LR34493, UL Listed File No. E108255, ISO 9001:2015 Registered



OFFICIAL QUOTE

100KVA 230 VOLTS TO 415 VOLTS
SINGLE PHASE AUTOTRANSFORMER



Country/Manufacturer	Canada/RPM
----------------------	----------------------------