



## 225KVA 575 VOLTS TO 230 VOLTS SINGLE PHASE AUTOTRANSFORMER

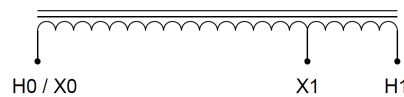
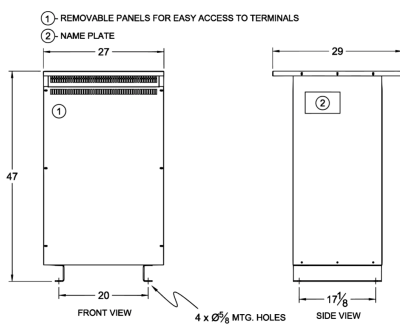
**\$13,946.60 CAD**

Single Phase Autotransformer with a capacity of 225kVA, transforming 575 Volts to 230 Volts

SKU: MC225J1-C1

Categories: [Autotransformer](#)

### SCHEMATIC/DIAGRAM AND DIMENSION PICTURES



Single Phase Autotransformer with a capacity of 225kVA, transforming 575 Volts to 230 Volts



## PRODUCT SPECIFICATIONS

|                            |  |
|----------------------------|--|
| Weight                     | 1042.9 lbs   |
| Phases                     | <a href="#">1</a>  |
| kVA                        | <a href="#">225</a>  |
| Connection                 | <a href="#">1PhA-NT-1</a>  |
| Primary Voltage            | <a href="#">575</a>  |
| Primary Max Current        | <a href="#">225.9A</a>   |
| Primary Markings           | <a href="#">H0-H1</a>  |
| Primary Terminals          | <a href="#">600MCM-2</a>   |
| Secondary Voltage          | <a href="#">230</a>  |
| Secondary Max Current      | <a href="#">564.8A</a>   |
| Secondary Markings         | <a href="#">X0-X1</a>  |
| Secondary Terminals        | <a href="#">Pads</a>   |
| Primary Taps               | <a href="#">N/A</a>  |
| Conductor Material         | <a href="#">Copper</a>   |
| Insulation Class           | <a href="#">220°C (Class H)</a>  |
| BIL (Insulation) Level     | <a href="#">10kV</a>   |
| Efficiency (@35% Load) %   | <a href="#">N/A</a>  |
| Impedance Range            | <a href="#">1.5 – 3.5%</a>   |
| Sound (db)                 | <a href="#">55 dB</a>  |
| Enclosure Type             | <a href="#">NEMA 3R Indoor</a>   |
| Enclosure Size             | <a href="#">E3R-8S</a>   |
| Finish/Colour              | <a href="#">Polyester Powder Coat – ANSI/ASA 61 Grey</a>   |
| Standards & Certifications | <a href="#">CSA Certified File No. LR34493, UL Listed File No. E108255, ISO 9001:2015 Registered</a> |



OFFICIAL QUOTE

225KVA 575 VOLTS TO 230 VOLTS  
SINGLE PHASE AUTOTRANSFORMER



|                      |                            |
|----------------------|----------------------------|
| Country/Manufacturer | <a href="#">Canada/RPM</a> |
|----------------------|----------------------------|