

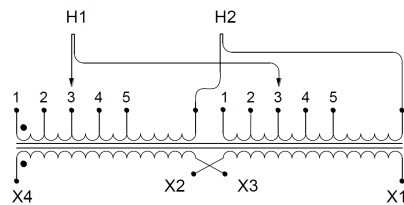
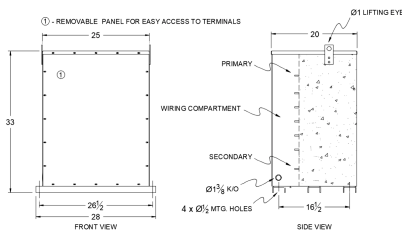
## SA100H1-K/EP

**\$6,967.74 USD**

SKU: 5ced161075bb

Categories: [Encapsulated Isolation Transformer](#)

### SCHEMATIC/DIAGRAM AND DIMENSION PICTURES



### PRODUCT SPECIFICATIONS

<b>Weight</b>	1460 lbs
<b>Phases</b>	<a href="#">1</a>
<b>kVA</b>	<a href="#">100</a>
<b>Connection</b>	<a href="#">1Ph-2coil-5t-SD</a>
<b>Primary Voltage</b>	<a href="#">460</a>
<b>Primary Max Current</b>	<a href="#">217.4A</a>



<b>Primary Markings</b>	<a href="#">H1-H2</a>
<b>Primary Terminals</b>	<a href="#">600MCM-2</a>
<b>Secondary Voltage</b>	<a href="#">120/240</a>
<b>Secondary Max Current</b>	<a href="#">833.3A</a>
<b>Secondary Markings</b>	<a href="#">X1-X3-X2-X4</a>
<b>Secondary Terminals</b>	<a href="#">Pads</a>
<b>Primary Taps</b>	<a href="#">+/- 2 x 2.5%</a>
<b>Conductor Material</b>	<a href="#">Aluminum</a>
<b>Temperatue Rise</b>	<a href="#">130°C</a>
<b>Insuation Class</b>	<a href="#">200°C</a>
<b>BIL (Insulation) Level</b>	<a href="#">10kV</a>
<b>Efficiency</b>	<a href="#">N/A</a>
<b>Impedance</b>	<a href="#">1.5 – 3.5%</a>
<b>Sound (db)</b>	<a href="#">50</a>
<b>Enclosure Type</b>	<a href="#">NEMA 3R Indoor</a>
<b>Enclosure</b>	<a href="#">E3R-1PEP-8</a>
<b>Finish</b>	<a href="#">Polyster Powder Coat – ANSI/ASA 61 Grey</a>
<b>Standards &amp; Certifications</b>	<a href="#">CSA Certified File No. LR34493, UL Listed File No. E108255, ISO 9001:2015 Registered</a>