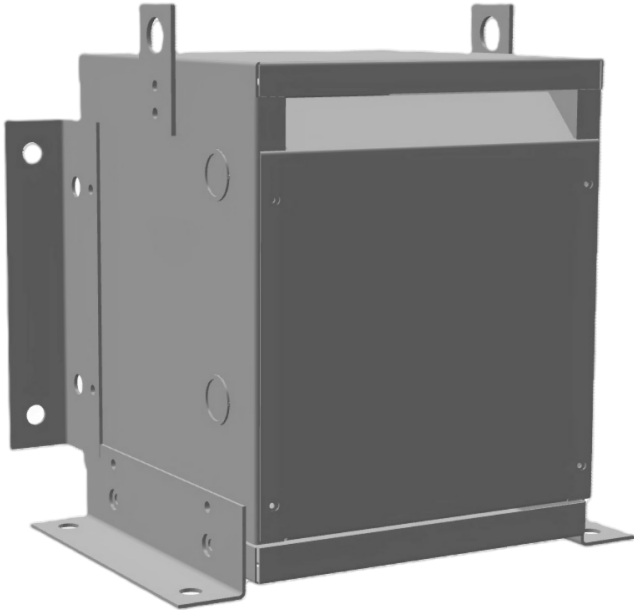




**10KVA 415 VOLTS TO 240 VOLTS
SINGLE PHASE AUTOTRANSFORMER**



10KVA 415 VOLTS TO 240 VOLTS SINGLE PHASE AUTOTRANSFORMER

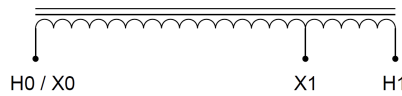
\$969.88 USD

Single Phase Autotransformer with a capacity of 10kVA, transforming 415 Volts to 240 Volts

SKU: MC10G2-C

Categories: [Autotransformer](#)

SCHEMATIC/DIAGRAM AND DIMENSION PICTURES



Single Phase Autotransformer with a capacity of 10kVA, transforming 415 Volts to 240 Volts



PRODUCT SPECIFICATIONS

Weight	78.1 lbs
Phases	1
kVA	10
Connection	1PhA-NT-1
Primary Voltage	415
Primary Max Current	13.9A
Primary Markings	H0-H1
Primary Terminals	Terminal Blocks
Secondary Voltage	240
Secondary Max Current	24.1A
Secondary Markings	X0-X1
Secondary Terminals	Terminal Blocks
Primary Taps	N/A
Conductor Material	Copper
Insulation Class	220°C (Class H)
BIL (Insulation) Level	10kV
Efficiency (@35% Load) %	N/A
Impedance Range	1.5 – 3.5%
Sound (db)	40 dB
Enclosure Type	NEMA 1
Enclosure Size	E1-2
Finish/Colour	Polyester Powder Coat – ANSI/ASA 61 Grey
Standards & Certifications	CSA Certified File No. LR34493, UL Listed File No. E108255, ISO 9001:2015 Registered



OFFICIAL QUOTE
10KVA 415 VOLTS TO 240 VOLTS
SINGLE PHASE AUTOTRANSFORMER



Country/Manufacturer	Canada/RPM
----------------------	----------------------------