

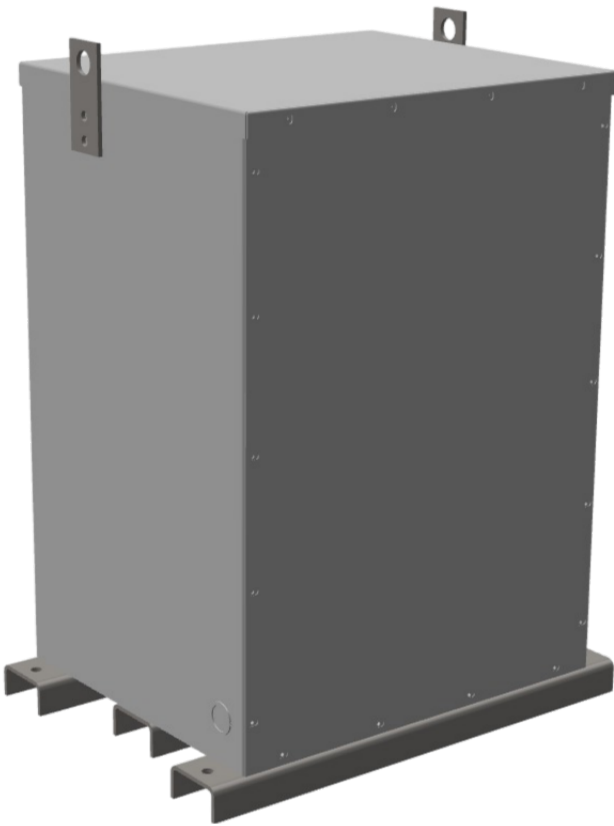


SA50H1-K/EP

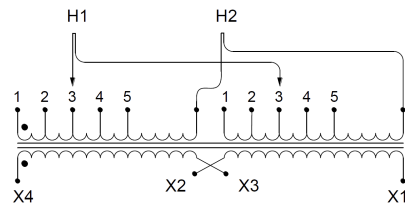
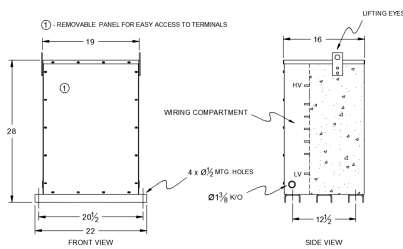
\$4,563.90 USD

SKU: b2d968f74647

Categories: [Encapsulated Isolation Transformer](#)



SCHEMATIC/DIAGRAM AND DIMENSION PICTURES



PRODUCT SPECIFICATIONS

Weight	750 lbs
Phases	1
kVA	50



Connection	1Ph-2coil-5t-SD
Primary Voltage	460
Primary Max Current	108.7A
Primary Markings	H1-H2
Primary Terminals	#2/0-6 AWG
Secondary Voltage	120/240
Secondary Max Current	416.7A
Secondary Markings	X1-X3-X2-X4
Secondary Terminals	Pads
Primary Taps	+/- 2 x 2.5%
Conductor Material	Aluminum
Temperatue Rise	130°C
Insuation Class	200°C
BIL (Insulation) Level	10kV
Efficiency	N/A
Impedance	1.5 – 3.5%
Sound (db)	45
Enclosure Type	NEMA 3R Indoor
Enclosure	E3R-1PEP-7
Finish	Polyster Powder Coat – ANSI/ASA 61 Grey
Standards & Certifications	CSA Certified File No. LR34493, UL Listed File No. E108255, ISO 9001:2015 Registered