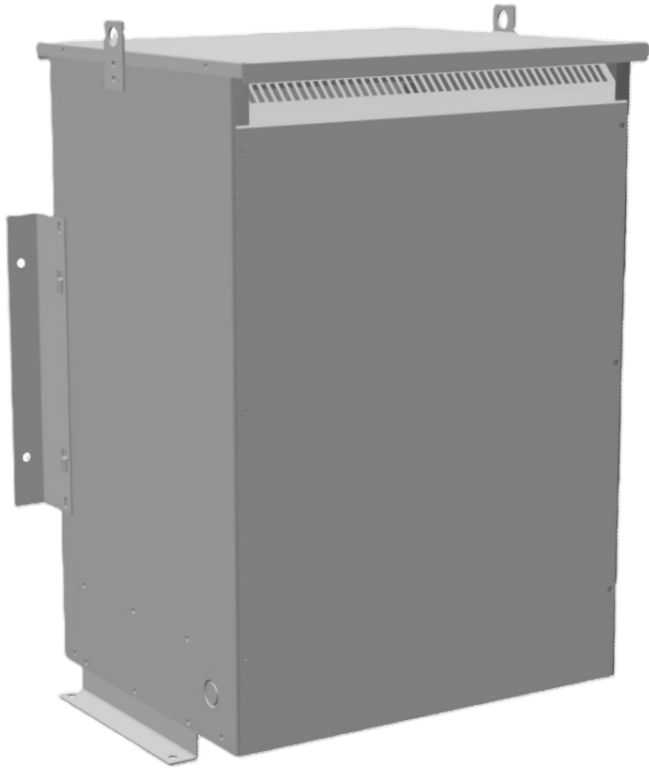




225KVA 277 VOLTS TO 415 VOLTS
SINGLE PHASE AUTOTRANSFORMER



**225KVA 277 VOLTS TO 415
VOLTS SINGLE PHASE
AUTOTRANSFORMER**

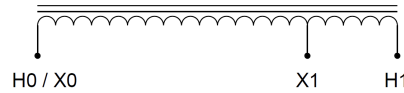
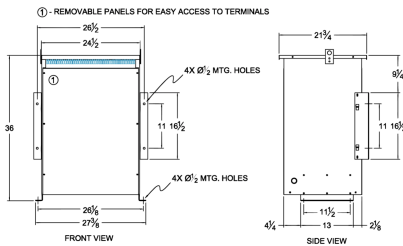
\$8,583.60 CAD

Single Phase Autotransformer with a capacity of 225kVA, transforming 277 Volts to 415 Volts

SKU: MC225D-G2

Categories: [Autotransformer](#)

SCHEMATIC/DIAGRAM AND DIMENSION PICTURES



Single Phase Autotransformer with a capacity of 225kVA, transforming 277 Volts to 415 Volts



PRODUCT SPECIFICATIONS

Weight	613.8 lbs
Phases	1
kVA	225
Connection	1PhA-NT-1
Primary Voltage	277
Primary Max Current	469A
Primary Markings	X0-X1
Primary Terminals	Pads
Secondary Voltage	415
Secondary Max Current	313A
Secondary Markings	H0-H1
Secondary Terminals	Pads
Primary Taps	N/A
Conductor Material	Copper
Insulation Class	220°C (Class H)
BIL (Insulation) Level	10kV
Efficiency (@35% Load) %	N/A
Impedance Range	1.0 – 3.0%
Sound (db)	55 dB
Enclosure Type	NEMA 3R Indoor
Enclosure Size	E3R-7
Finish/Colour	Polyester Powder Coat – ANSI/ASA 61 Grey
Standards & Certifications	CSA Certified File No. LR34493, UL Listed File No. E108255, ISO 9001:2015 Registered



OFFICIAL QUOTE

225KVA 277 VOLTS TO 415 VOLTS
SINGLE PHASE AUTOTRANSFORMER



Country/Manufacturer

[Canada/RPM](#)