

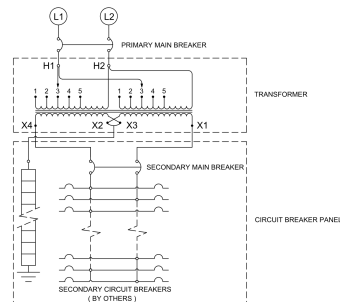
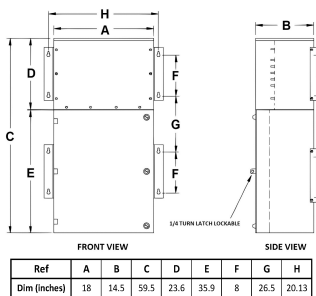
25KVA 600 VOLTS TO 120/240 VOLTS SINGLE PHASE PUSH-ON BREAKER MINI POWER CENTER

\$9,128.70 CAD

SKU: MP1A25J-K

Categories: [Mini Power Centers](#)

SCHEMATIC/DIAGRAM AND DIMENSION PICTURES





PRODUCT SPECIFICATIONS

| | |
|-----------------------------|--|
| Weight | 570 lbs |
| Phases | 1 |
| kVA | 25 |
| Connection | MPC1P-5t |
| Primary Taps | +/- 2 x 2.5% |
| Conductor Material | Aluminum |
| BIL (Insulation) Level | 10kV |
| Impedance Range | 1.5 – 3.0% |
| Enclosure Type | NEMA 3R Outdoor |
| Enclosure Size | E3R-1PMPC-3 |
| Finish/Colour | Polyester Powder Coat – ANSI/ASA 61 Grey |
| Standards & Certifications | CSA Certified File No. LR34493, UL Listed File No. E495724, ISO 9001:2015 Registered |
| Incoming Voltage | 600 |
| Primary Breaker | 100A |
| Interrupting Rating | 14kAIC @ 600V |
| Output Voltage | 120/240 |
| Secondary Breaker | 125A |
| Short Circuit Withstand | 10kAIC @ 240V |
| Panel Board | Push-On |
| Load Center Bus Material | Aluminum |
| # of Circuits | 30 |
| Circuit Breaker Suitability | Eaton Type BR |
| Temperatue Rise | 130°C |



OFFICIAL QUOTE

25KVA 600 VOLTS TO 120/240 VOLTS
SINGLE PHASE PUSH-ON BREAKER
MINI POWER CENTER



| | |
|----------------------|---------------------------------|
| Insuation Class | 200°C (Class N) |
| Country/Manufacturer | Canada/RPM |