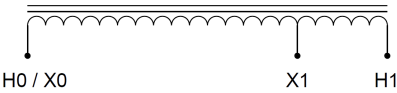
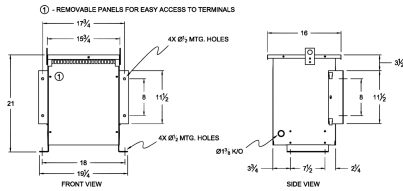


# MC37H-C

## \$2,448.00 CAD

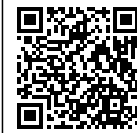
SKU: b917bb7c19e5  
Categories: [Autotransformer](#)

### SCHEMATIC/DIAGRAM AND DIMENSION PICTURES



### PRODUCT SPECIFICATIONS

Weight	165 lbs
Phases	<a href="#">1</a>
kVA	<a href="#">37.5</a>
Connection	<a href="#">1PhA-NT-1</a>
Primary Voltage	<a href="#">480</a>
Primary Max Current	<a href="#">78.1A</a>
Primary Markings	<a href="#">H0-H1</a>



Primary Terminals	<a href="#">#2-14 AWG</a>
Secondary Voltage	<a href="#">240</a>
Secondary Max Current	<a href="#">156.3A</a>
Secondary Markings	<a href="#">X0-X1</a>
Secondary Terminals	<a href="#">300MCM-6</a>
Primary Taps	<a href="#">N/A</a>
Conductor Material	<a href="#">Copper</a>
Insulation Class	<a href="#">220°C</a>
BIL (Insulation) Level	<a href="#">10kV</a>
Efficiency	<a href="#">N/A</a>
Impedance	<a href="#">2.5 – 4.5%</a>
Sound (db)	<a href="#">50</a>
Enclosure Type	<a href="#">NEMA 3R Indoor</a>
Enclosure	<a href="#">E3R-4</a>
Finish	<a href="#">Polyster Powder Coat – ANSI/ASA 61 Grey</a>
Standards & Certifications	<a href="#">CSA Certified File No. LR34493, UL Listed File No. E108255, ISO 9001:2015 Registered</a>