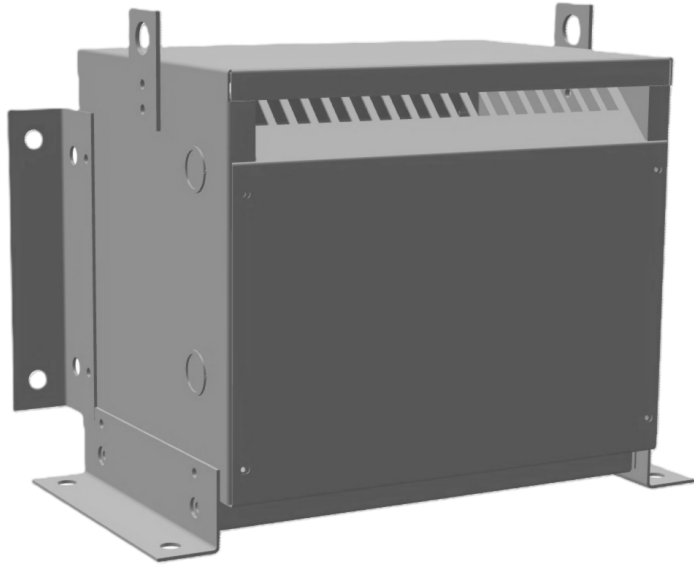


3VA 415 VOLTS TO 415Y/240 VOLTS  
THREE PHASE ISOLATION  
TRANSFORMER



**3VA 415 VOLTS TO  
415Y/240 VOLTS THREE  
PHASE ISOLATION  
TRANSFORMER**

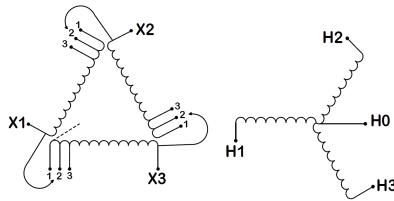
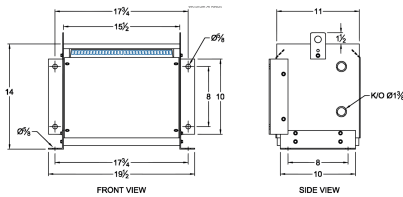
**\$1,541.05 CAD**

Three Phase Isolation Transformer with a capacity of 3kVA, transforming 415 Volts to 415Y/240 Volts

**SKU:** BC3G2-N2

**Categories:** [Isolation Transformers](#)

**SCHEMATIC/DIAGRAM AND DIMENSION PICTURES**



Three Phase Isolation Transformer with a capacity of 3kVA, transforming 415 Volts to 415Y/240 Volts

3VA 415 VOLTS TO 415Y/240 VOLTS  
THREE PHASE ISOLATION  
TRANSFORMER



PRODUCT SPECIFICATIONS

|                            |  |
|----------------------------|--|
| Weight                     | 73 lbs   |
| Phases                     | <a href="#">3</a>  |
| kVA                        | <a href="#">3</a>  |
| Connection                 | <a href="#">3Ph-DY-3T-SU</a>   |
| Primary Voltage            | <a href="#">415</a>  |
| Primary Max Current        | <a href="#">4.17A</a>  |
| Primary Markings           | <a href="#">H1-H2-H3</a>   |
| Primary Terminals          | <a href="#">#2-14 AWG</a>  |
| Secondary Voltage          | <a href="#">415Y/240</a>   |
| Secondary Max Current      | <a href="#">4.17A</a>  |
| Secondary Markings         | <a href="#">X0-X1-X2-X3</a>  |
| Secondary Terminals        | <a href="#">#2-14 AWG</a>  |
| Primary Taps               | <a href="#">+/- 1 x 5%</a>   |
| Conductor Material         | <a href="#">Copper</a>   |
| BIL (Insulation) Level     | <a href="#">10kV</a>   |
| Efficiency (@35% Load) %   | <a href="#">N/A</a>  |
| Impedance Range            | <a href="#">5.0 – 7.0%</a>   |
| Sound (db)                 | <a href="#">40</a>   |
| Enclosure Type             | <a href="#">NEMA 1</a>   |
| Enclosure Size             | <a href="#">E1-3</a>   |
| Finish/Colour              | <a href="#">Polyester Powder Coat – ANSI/ASA 61 Grey</a>   |
| Standards & Certifications | <a href="#">CSA Certified File No. LR34493, UL Listed File No. E108255, ISO 9001:2015 Registered</a> |
| Temperatue Rise            | <a href="#">115°C</a>  |

OFFICIAL QUOTE

3VA 415 VOLTS TO 415Y/240 VOLTS  
THREE PHASE ISOLATION  
TRANSFORMER



|                      |  |
|----------------------|--|
| Insuation Class      | <a href="#">115°C</a>                                    |
| Country/Manufacturer | <a href="#">Canada/RPM</a>                               |
| Finish/Colour        | <a href="#">Polyester Powder Coat – ANSI/ASA 61 Grey</a> |