

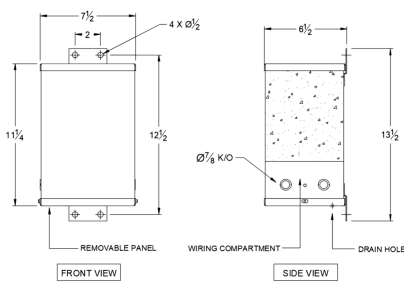
SC1.5H1-K/EP

\$631.00 CAD

SKU: beef1bc19c75

Categories: [Encapsulated Isolation Transformer](#)

SCHEMATIC/DIAGRAM AND DIMENSION PICTURES



PRODUCT SPECIFICATIONS

Weight	40 lbs
Phases	1



kVA	1.5
Connection	1Ph-1coil-NT-SD
Primary Voltage	460
Primary Max Current	3.3A
Primary Markings	H1-H2
Primary Terminals	Leads
Secondary Voltage	120/240
Secondary Max Current	12.5A
Secondary Markings	X1-X3-X2-X4
Secondary Terminals	Leads
Primary Taps	N/A
Conductor Material	Copper
Temperatue Rise	115°C
Insuation Class	180°C
BIL (Insulation) Level	10kV
Efficiency	N/A
Impedance	1.5 – 3.5%
Sound (db)	40
Enclosure Type	NEMA 3R Indoor
Enclosure	E3R-1PEP-3
Finish	Polyster Powder Coat – ANSI/ASA 61 Grey
Standards & Certifications	CSA Certified File No. LR34493, UL Listed File No. E108255, ISO 9001:2015 Registered