



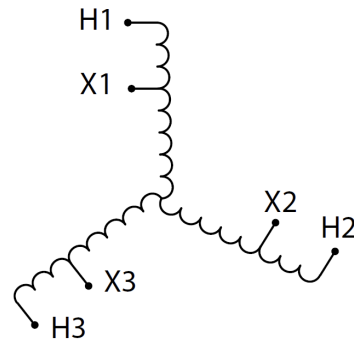
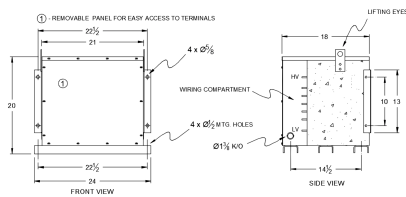
RC112J-H/EP

\$5,850.00 CAD

SKU: 021ffb58de42

Categories: [Encapsulated Autotransformer](#)

SCHEMATIC/DIAGRAM AND DIMENSION PICTURES



PRODUCT SPECIFICATIONS

Weight	630 lbs
Phases	3
kVA	112.5
Connection	3PhA-NT-1
Primary Voltage	600
Primary Max Current	108.3A



Primary Markings	H1-H2-H3
Primary Terminals	300MCM-6
Secondary Voltage	480
Secondary Max Current	135.3A
Secondary Markings	X1-X2-X3
Secondary Terminals	300MCM-6
Primary Taps	N/A
Conductor Material	Copper
Insuation Class	220
BIL (Insulation) Level	10kV
Efficiency	N/A
Impedance	0.5 – 1.5%
Sound (db)	45
Enclosure Type	NEMA 3R Indoor
Enclosure	E3R-3PEP-5