



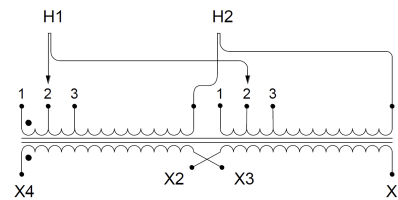
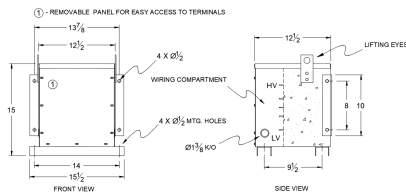
SC5H1-K/EP

\$1,714.00 CAD

SKU: 42d1c2cfdfe6

Categories: [Encapsulated Isolation Transformer](#)

SCHEMATIC/DIAGRAM AND DIMENSION PICTURES



PRODUCT SPECIFICATIONS

Weight	155 lbs
Phases	1
kVA	5
Connection	1Ph-2coil-3t-SD
Primary Voltage	460
Primary Max Current	10.9A
Primary Markings	H1-H2



Primary Terminals	#2-14 AWG
Secondary Voltage	120/240
Secondary Max Current	41.7A
Secondary Markings	X1-X3-X2-X4
Secondary Terminals	#2-14 AWG
Primary Taps	+/- 1 x 5%
Conductor Material	Copper
Temperatue Rise	115°C
Insuation Class	180°C
BIL (Insulation) Level	10kV
Efficiency	N/A
Impedance	1.5 – 3.5%
Sound (db)	40
Enclosure Type	NEMA 3R Indoor
Enclosure	E3R-1PEP-4
Finish	Polyster Powder Coat – ANSI/ASA 61 Grey
Standards & Certifications	CSA Certified File No. LR34493, UL Listed File No. E108255, ISO 9001:2015 Registered