

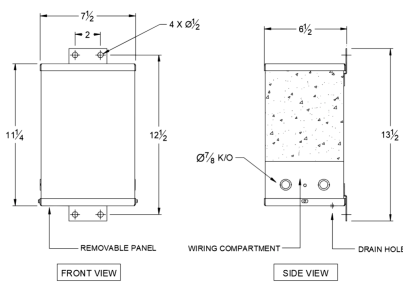
## SC2H1-K/EP

**\$772.00 CAD**

SKU: 29c32e973ee4

Categories: [Encapsulated Isolation Transformer](#)

### SCHEMATIC/DIAGRAM AND DIMENSION PICTURES



### PRODUCT SPECIFICATIONS

<b>Weight</b>	45 lbs
<b>Phases</b>	<a href="#">1</a>



<b>kVA</b>	<a href="#">2</a>
<b>Connection</b>	<a href="#">1Ph-1coil-NT-SD</a>
<b>Primary Voltage</b>	<a href="#">460</a>
<b>Primary Max Current</b>	<a href="#">4.3A</a>
<b>Primary Markings</b>	<a href="#">H1-H2</a>
<b>Primary Terminals</b>	<a href="#">Leads</a>
<b>Secondary Voltage</b>	<a href="#">120/240</a>
<b>Secondary Max Current</b>	<a href="#">16.7A</a>
<b>Secondary Markings</b>	<a href="#">X1-X3-X2-X4</a>
<b>Secondary Terminals</b>	<a href="#">Leads</a>
<b>Primary Taps</b>	<a href="#">N/A</a>
<b>Conductor Material</b>	<a href="#">Copper</a>
<b>Temperatue Rise</b>	<a href="#">115°C</a>
<b>Insuation Class</b>	<a href="#">180°C</a>
<b>BIL (Insulation) Level</b>	<a href="#">10kV</a>
<b>Efficiency</b>	<a href="#">N/A</a>
<b>Impedance</b>	<a href="#">1.5 – 3.5%</a>
<b>Sound (db)</b>	<a href="#">40</a>
<b>Enclosure Type</b>	<a href="#">NEMA 3R Indoor</a>
<b>Enclosure</b>	<a href="#">E3R-1PEP-3</a>
<b>Finish</b>	<a href="#">Polyster Powder Coat – ANSI/ASA 61 Grey</a>
<b>Standards &amp; Certifications</b>	<a href="#">CSA Certified File No. LR34493, UL Listed File No. E108255, ISO 9001:2015 Registered</a>