



**15KVA 415 VOLTS TO 200 VOLTS
SINGLE PHASE AUTOTRANSFORMER**



15KVA 415 VOLTS TO 200 VOLTS SINGLE PHASE AUTOTRANSFORMER

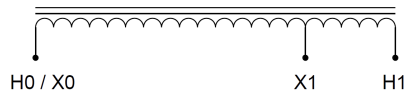
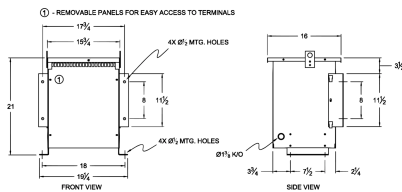
\$1,766.50 CAD

Single Phase Autotransformer with a capacity of 15kVA, transforming 415 Volts to 200 Volts

SKU: MC15G2-B1

Categories: Autotransformer

SCHEMATIC/DIAGRAM AND DIMENSION PICTURES



Single Phase Autotransformer with a capacity of 15kVA, transforming 415 Volts to 200 Volts



PRODUCT SPECIFICATIONS

Weight	104.1 lbs
Phases	1
kVA	15
Connection	1PhA-NT-1
Primary Voltage	415
Primary Max Current	20.9A
Primary Markings	H0-H1
Primary Terminals	Terminal Blocks
Secondary Voltage	200
Secondary Max Current	43.3A
Secondary Markings	X0-X1
Secondary Terminals	#2-14 AWG
Primary Taps	N/A
Conductor Material	Copper
Insulation Class	220°C (Class H)
BIL (Insulation) Level	10kV
Efficiency (@35% Load) %	N/A
Impedance Range	1.5 – 3.5%
Sound (db)	40 dB
Enclosure Type	NEMA 3R Indoor
Enclosure Size	E3R-4
Finish/Colour	Polyester Powder Coat – ANSI/ASA 61 Grey
Standards & Certifications	CSA Certified File No. LR34493, UL Listed File No. E108255, ISO 9001:2015 Registered



OFFICIAL QUOTE
15KVA 415 VOLTS TO 200 VOLTS
SINGLE PHASE AUTOTRANSFORMER



Country/Manufacturer	Canada/RPM
----------------------	----------------------------