



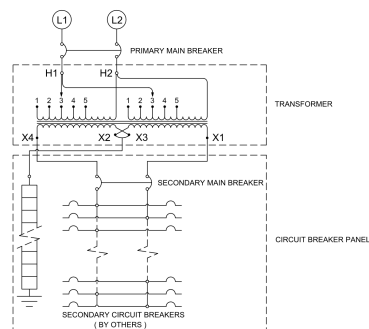
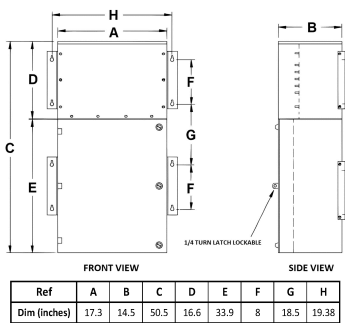
15KVA 480 VOLTS TO 120/240 VOLTS SINGLE PHASE PUSH-ON BREAKER MINI POWER CENTER

\$7,334.00 CAD

SKU: MP1A15H-K

Categories: [Mini Power Centers](#)

SCHEMATIC/DIAGRAM AND DIMENSION PICTURES





15KVA 480 VOLTS TO 120/240 VOLTS
SINGLE PHASE PUSH-ON BREAKER
MINI POWER CENTER

PRODUCT SPECIFICATIONS

Weight	375 lbs
Phases	1
kVA	15
Connection	MPC1P-5t
Primary Taps	+/- 2 x 2.5%
Conductor Material	Aluminum
BIL (Insulation) Level	10kV
Impedance Range	1.5 – 3.0%
Enclosure Type	NEMA 3R Outdoor
Enclosure Size	E3R-1PMPC-2
Finish/Colour	Polyester Powder Coat – ANSI/ASA 61 Grey
Standards & Certifications	CSA Certified File No. LR34493, UL Listed File No. E495724, ISO 9001:2015 Registered
Incoming Voltage	480
Primary Breaker	60A
Interrupting Rating	14kAIC @ 480V
Output Voltage	120/240
Secondary Breaker	70A
Short Circuit Withstand	10kAIC @ 240V
Panel Board	Push-On
Load Center Bus Material	Aluminum
# of Circuits	20
Circuit Breaker Suitability	Eaton Type BR
Temperatue Rise	130°C
Insuation Class	200°C (Class N)



OFFICIAL QUOTE

15KVA 480 VOLTS TO 120/240 VOLTS
SINGLE PHASE PUSH-ON BREAKER
MINI POWER CENTER



Country/Manufacturer	Canada/RPM
----------------------	----------------------------