

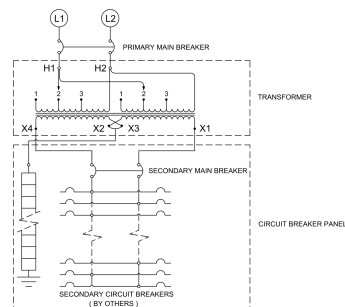
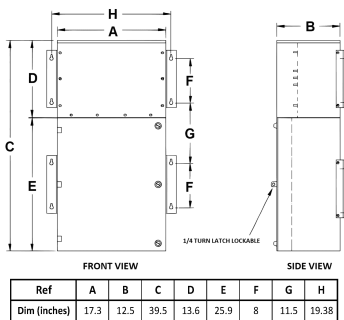
## 7.5KVA 480 VOLTS TO 120/240 VOLTS SINGLE PHASE PUSH-ON BREAKER MINI POWER CENTER

**\$6,134.00 CAD**

SKU: MP1C7H-K

Categories: [Mini Power Centers](#)

### SCHEMATIC/DIAGRAM AND DIMENSION PICTURES



### PRODUCT SPECIFICATIONS



7.5KVA 480 VOLTS TO 120/240 VOLTS  
SINGLE PHASE PUSH-ON BREAKER  
MINI POWER CENTER

Weight	275 lbs
Phases	<a href="#">1</a>
kVA	<a href="#">7.5</a>
Connection	<a href="#">MPC1P-3t</a>
Primary Taps	<a href="#">+/- 1 x 5%</a>
Conductor Material	<a href="#">Copper</a>
BIL (Insulation) Level	<a href="#">10kV</a>
Impedance Range	<a href="#">1.5 – 3.0%</a>
Enclosure Type	<a href="#">NEMA 3R Outdoor</a>
Enclosure Size	<a href="#">E3R-1PMPC-1</a>
Finish/Colour	<a href="#">Polyester Powder Coat – ANSI/ASA 61 Grey</a>
Standards & Certifications	<a href="#">CSA Certified File No. LR34493, UL Listed File No. E495724, ISO 9001:2015 Registered</a>
Incoming Voltage	<a href="#">480</a>
Primary Breaker	<a href="#">30A</a>
Interrupting Rating	<a href="#">14kAIC @ 480V</a>
Output Voltage	<a href="#">120/240</a>
Secondary Breaker	<a href="#">40A</a>
Short Circuit Withstand	<a href="#">10kAIC @ 240V</a>
Panel Board	<a href="#">Push-On</a>
Load Center Bus Material	<a href="#">Aluminum</a>
# of Circuits	<a href="#">12</a>
Circuit Breaker Suitability	<a href="#">Eaton Type BR</a>
Temperatue Rise	<a href="#">130°C</a>
Insuation Class	<a href="#">200°C (Class N)</a>
Country/Manufacturer	<a href="#">Canada/RPM</a>