



100KVA 600 VOLTS TO 120/240 VOLTS SINGLE PHASE ENCAPSULATED ISOLATION TRANSFORMER

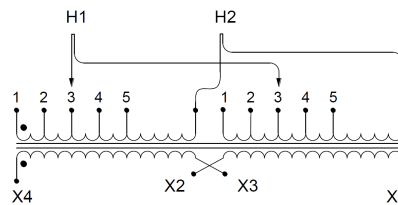
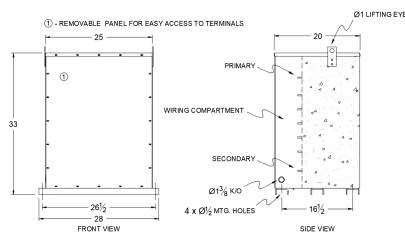
\$6,732.07 USD

Single Phase Encapsulated Isolation Transformer
with a capacity of 100kVA, transforming 600 Volts
to 120/240 Volts

SKU: SA100J-K/EP

Categories: [Encapsulated Isolation Transformer](#)

SCHEMATIC/DIAGRAM AND DIMENSION PICTURES



Single Phase Encapsulated Isolation Transformer with a capacity of 100kVA, transforming 600 Volts to 120/240 Volts

100KVA 600 VOLTS TO 120/240
VOLTS SINGLE PHASE
ENCAPSULATED ISOLATION
TRANSFORMER



PRODUCT SPECIFICATIONS

Weight	1460 lbs
Phases	1
kVA	100
Connection	1Ph-2coil-5t-SD
Primary Voltage	600
Primary Max Current	166.7A
Primary Markings	H1-H2
Primary Terminals	300MCM-6
Secondary Voltage	120/240
Secondary Max Current	833.3A
Secondary Markings	X1-X3-X2-X4
Secondary Terminals	Pads
Primary Taps	+/- 2 x 2.5%
Conductor Material	Aluminum
BIL (Insulation) Level	10kV
Efficiency (@35% Load) %	N/A
Impedance Range	1.5 – 3.5%
Sound (db)	50
Enclosure Type	NEMA 3R Indoor
Enclosure Size	E3R-1PEP-8
Finish/Colour	Polyester Powder Coat – ANSI/ASA 61 Grey
Standards & Certifications	CSA Certified File No. LR34493, UL Listed File No. E108255, ISO 9001:2015 Registered
Country/Manufacturer	Canada/RPM