



**100KVA 240 VOLTS TO 230 VOLTS  
SINGLE PHASE AUTOTRANSFORMER**

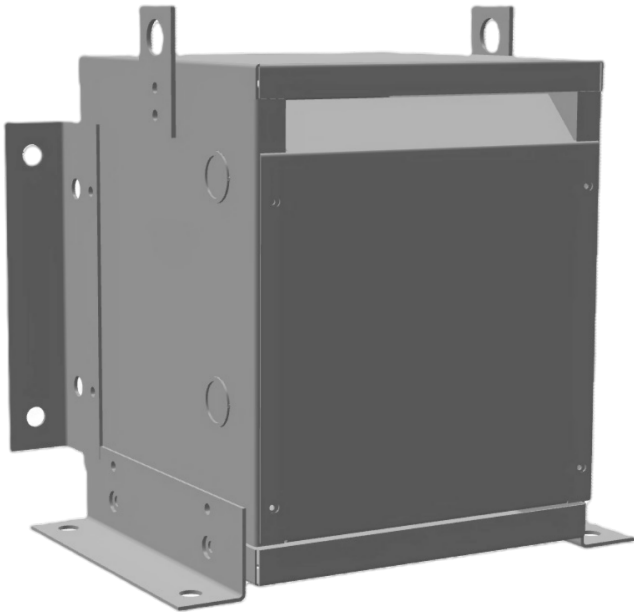
**100KVA 240 VOLTS TO 230  
VOLTS SINGLE PHASE  
AUTOTRANSFORMER**

**\$1,321.00 CAD**

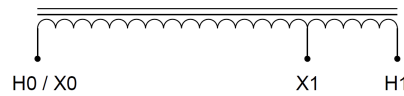
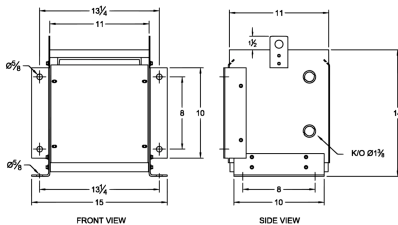
Single Phase Autotransformer with a capacity of 100kVA, transforming 240 Volts to 230 Volts

**SKU:** MC100C-C1

**Categories:** [Autotransformer](#)



**SCHEMATIC/DIAGRAM AND DIMENSION PICTURES**



Single Phase Autotransformer with a capacity of 100kVA, transforming 240 Volts to 230 Volts



PRODUCT SPECIFICATIONS

<b>Weight</b>	91.2 lbs
<b>Phases</b>	<a href="#">1</a>
<b>kVA</b>	<a href="#">100</a>
<b>Connection</b>	<a href="#">1PhA-NT-1</a>
<b>Primary Voltage</b>	<a href="#">240</a>
<b>Primary Max Current</b>	<a href="#">240.6A</a>
<b>Primary Markings</b>	<a href="#">H0-H1</a>
<b>Primary Terminals</b>	<a href="#">600MCM-2</a>
<b>Secondary Voltage</b>	<a href="#">230</a>
<b>Secondary Max Current</b>	<a href="#">251A</a>
<b>Secondary Markings</b>	<a href="#">X0-X1</a>
<b>Secondary Terminals</b>	<a href="#">600MCM-2</a>
<b>Primary Taps</b>	<a href="#">N/A</a>
<b>Conductor Material</b>	<a href="#">Copper</a>
<b>Insulation Class</b>	<a href="#">220°C (Class H)</a>
<b>BIL (Insulation) Level</b>	<a href="#">10kV</a>
<b>Efficiency (@35% Load) %</b>	<a href="#">N/A</a>
<b>Impedance Range</b>	<a href="#">0.5 – 1.5%</a>
<b>Sound (db)</b>	<a href="#">40 dB</a>
<b>Enclosure Type</b>	<a href="#">NEMA 1</a>
<b>Enclosure Size</b>	<a href="#">E1-2</a>
<b>Finish/Colour</b>	<a href="#">Polyester Powder Coat – ANSI/ASA 61 Grey</a>
<b>Standards &amp; Certifications</b>	<a href="#">CSA Certified File No. LR34493, UL Listed File No. E108255, ISO 9001:2015 Registered</a>



OFFICIAL QUOTE

100KVA 240 VOLTS TO 230 VOLTS  
SINGLE PHASE AUTOTRANSFORMER



Country/Manufacturer

[Canada/RPM](#)