



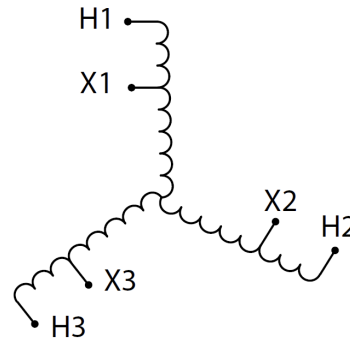
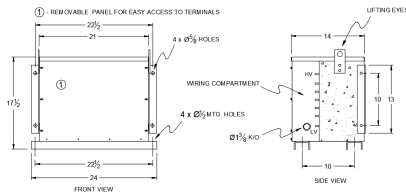
RC75J-H/EP

\$4,582.00 CAD

SKU: 4daae780a05c

Categories: [Encapsulated Autotransformer](#)

SCHEMATIC/DIAGRAM AND DIMENSION PICTURES



PRODUCT SPECIFICATIONS

Weight	560 lbs
Phases	3
kVA	75
Connection	3PhA-NT-1
Primary Voltage	600
Primary Max Current	72.2A



Primary Markings	H1-H2-H3
Primary Terminals	#2/0-6 AWG
Secondary Voltage	480
Secondary Max Current	90.2A
Secondary Markings	X1-X2-X3
Secondary Terminals	#2/0-6 AWG
Primary Taps	N/A
Conductor Material	Copper
Insulation Class	220
BIL (Insulation) Level	10kV
Efficiency	N/A
Impedance	0.5 – 1.5%
Sound (db)	45
Enclosure Type	NEMA 3R Indoor
Enclosure	E3R-3PEP-4