

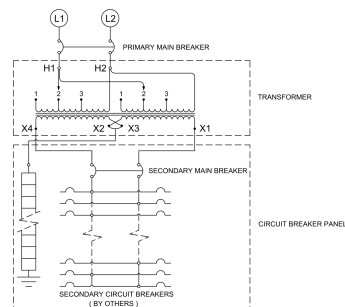
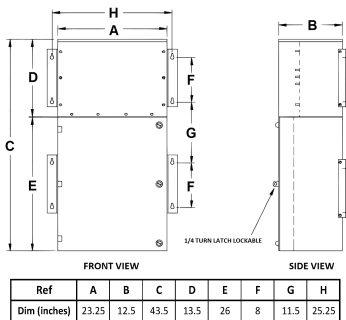
7.5KVA 480 VOLTS TO 120/240 VOLTS SINGLE PHASE BOLT-ON BREAKER MINI POWER CENTER

\$8,809.00 CAD

SKU: MP1C7H-K/BO/CLC

Categories: [Mini Power Centers](#)

SCHEMATIC/DIAGRAM AND DIMENSION PICTURES



PRODUCT SPECIFICATIONS



7.5KVA 480 VOLTS TO 120/240 VOLTS
SINGLE PHASE BOLT-ON BREAKER
MINI POWER CENTER

| | |
|-----------------------------|--|
| Weight | 275 lbs |
| Phases | 1 |
| kVA | 7.5 |
| Connection | MPC1P-3t |
| Primary Taps | +/- 1 x 5% |
| Conductor Material | Copper |
| BIL (Insulation) Level | 10kV |
| Impedance Range | 1.5 – 3.0% |
| Enclosure Type | NEMA 3R Outdoor |
| Enclosure Size | E3R-1PMPC-1B |
| Finish/Colour | Polyester Powder Coat – ANSI/ASA 61 Grey |
| Standards & Certifications | CSA Certified File No. LR34493, UL Listed File No. E495724, ISO 9001:2015 Registered |
| Incoming Voltage | 480 |
| Primary Breaker | 30A |
| Interrupting Rating | 14kAIC @ 480V |
| Output Voltage | 120/240 |
| Secondary Breaker | 40A |
| Short Circuit Withstand | 10kAIC @ 240V |
| Panel Board | Bolt-On |
| Load Center Bus Material | Copper |
| # of Circuits | 18 |
| Circuit Breaker Suitability | Eaton Type BAB |
| Temperatue Rise | 130°C |
| Insuation Class | 200°C (Class N) |
| Country/Manufacturer | Canada/RPM |