

9KVA 600 VOLTS TO 208Y/120 VOLTS  
THREE PHASE ISOLATION  
TRANSFORMER



9KVA 600 VOLTS TO  
208Y/120 VOLTS THREE  
PHASE ISOLATION  
TRANSFORMER

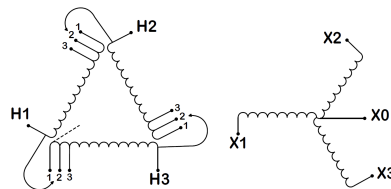
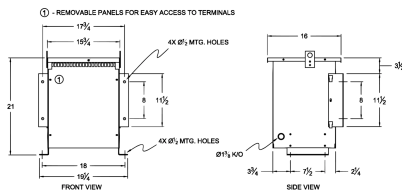
**\$2,090.00 CAD**

9kVA 600 Volts to 208Y/120 Volts Three Phase Isolation Transformer

SKU: a4c6e3a13c0b

Categories: [Isolation Transformers](#)

SCHEMATIC/DIAGRAM AND DIMENSION PICTURES



9kVA 600 Volts to 208Y/120 Volts Three Phase Isolation Transformer

9KVA 600 VOLTS TO 208Y/120 VOLTS  
THREE PHASE ISOLATION  
TRANSFORMER



**PRODUCT DESCRIPTION**

**Three Phase Isolation Transformer with a capacity of 9kVA, transforming 600 Volts to 208Y/120 volts.**

Isolation transformers are designed to electrically separate the primary and secondary circuits while allowing the safe transfer of AC power. Available in both single-phase and three-phase configurations, these transformers help prevent direct current (DC) transmission, reduce electrical noise, and minimize interference from ground loops. By providing galvanic isolation, isolation transformers protect sensitive equipment from power disturbances and voltage fluctuations. Secondary neutral-to-ground bonding establishes a stable reference point, effectively reducing common-mode noise and improving system reliability.

Ideal for industrial, commercial, and medical applications, isolation transformers enhance electrical safety, improve power quality, and ensure compliance with industry standards. Their ability to suppress transient surges and eliminate unwanted interference makes them essential for environments requiring clean and stable power.

**Dimensional Drawing (Dimensions in inches)**

*All information and images provided are based on preliminary data or design and are subject to change without notice. If precise dimensions are critical, please request a Pre-Production Approval Drawing from the Optional Feature tab for confirmation.*

**PRODUCT SPECIFICATIONS**

<b>Weight</b>	130 lbs
<b>Phases</b>	<a href="#">3</a>
<b>kVA</b>	<a href="#">9</a>
<b>Connection</b>	<a href="#">3Ph-DY-3T-SD</a>
<b>Primary Voltage</b>	<a href="#">600</a>
<b>Primary Max Current</b>	<a href="#">8.7A</a>
<b>Primary Markings</b>	<a href="#">H1-H2-H3</a>
<b>Primary Terminals</b>	<a href="#">Terminal Blocks</a>
<b>Secondary Voltage</b>	<a href="#">208Y/120</a>
<b>Secondary Max Current</b>	<a href="#">25A</a>

9KVA 600 VOLTS TO 208Y/120 VOLTS  
THREE PHASE ISOLATION  
TRANSFORMER



Secondary Markings	<a href="#">X0-X1-X2-X3</a>
Secondary Terminals	<a href="#">Terminal Blocks</a>
Primary Taps	<a href="#">+/- 1 x 5%</a>
Conductor Material	<a href="#">Copper</a>
Insuation Class	<a href="#">220°C</a>
BIL (Insulation) Level	<a href="#">10kV</a>
Impedance	<a href="#">5.5 – 7.0%</a>
Sound (db)	<a href="#">40</a>
Enclosure Type	<a href="#">NEMA 3R Indoor</a>
Enclosure	<a href="#">E3R-4</a>
Finish	<a href="#">Polyster Powder Coat – ANSI/ASA 61 Grey</a>
Standards & Certifications	<a href="#">CSA Certified File No. LR34493, UL Listed File No. E108255, ISO 9001:2015 Registered</a>
Efficiency	<a href="#">N/A</a>